

**Building the world, better**



**EPF**

**ENGINEERING PVT. LTD.**

# we are TPF Engineering Private Limited

We are TPF Engineering Pvt. Ltd., a civil engineering consultancy firm, specializing in infrastructure design and consultancy for over the last 50 years.

We provide sustainable infrastructure advisory services to our clients and aim to be the best engineering consultant in the market and be recognized by our clients as the same.

TPF Engineering Pvt. Ltd. is a subsidiary of TPF S.A., a Belgian multi-national organization having over 4000 collaborators operating in over 58 countries around the world.

Headquartered at Navi Mumbai, India

---

Specialized in the fields of roads & highways, bridges, buildings, water and environment

---

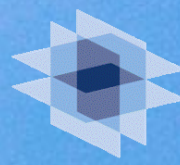
450+ employees

---

Delivering quality services to clients for 55+ years

---





TPF

Certified under ISO  
9001:2015

---

Member of TPF group

---

Engaged in 15+ states

---

Present in over 58 countries  
around the world

---

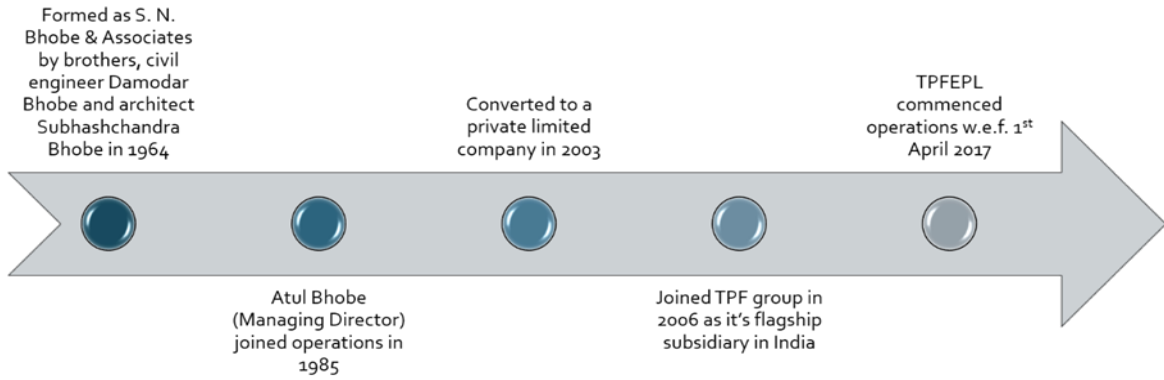
Completed more than 400  
projects

---

TPF SA recognized at #47 by  
ENR rankings in 2023 under  
'Top 225 international Design  
Firms' category

---

# Our history



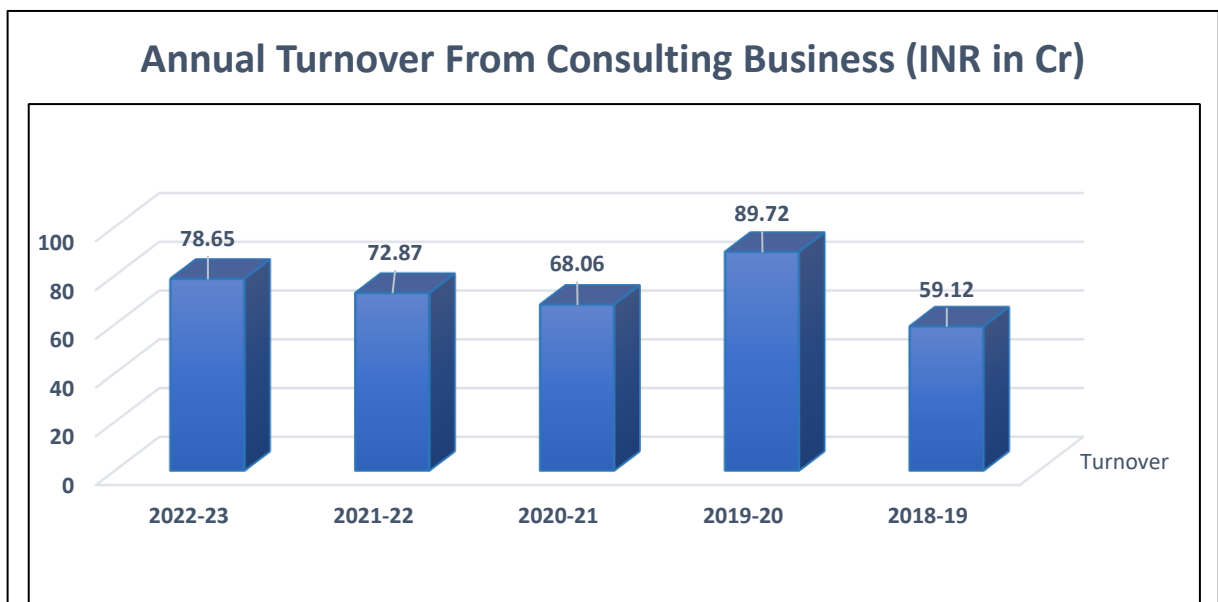
## Company Details

Corporate Identification No. : U74999MH2015FTC269228      PAN : AAFCT5080K  
Udyog Adhaar No. : MH33E0158100      GST : 27AAFCT5080K1ZZ

**OUR MISSION is to...**  
Be the best in Engineering Consultancy

**OUR VISION is to...**  
Be recognized by our customers as their best consultant

## Annual Turnover



# Some of our esteemed clients...



Building the world, better



# Association with TPF Group

TPF S.A. was formed in 1991 and today, is one of the fastest growing engineering, architecture, and management consultancies in Europe. The group is **headquartered at Brussels, Belgium** and through sub-holding companies in Spain and Portugal, **is established in 47 countries and active in 58, with more than 4000 collaborators** delivering engineering solutions to our clients. In 2022, the group achieved a turnover of 281 Million Euros. In 2023, the group is ranked #47 by ENR as one of the top 225 international design firms.

Over the years, the group has successively expanded in Europe, Asia, Africa and America through a series of acquisitions and today TPF is globally known for its activities in the following sectors:

- building,
- transport infrastructure,
- water, environment and energy

In addition to this, TPF has also developed six other related trades:

- implementation of turnkey projects,
- operation and maintenance of technical installations in the energy and water sectors
- development, implementation and investment in projects in the renewable energy sector, associated to the management of dedicated investment funds where appropriate,
- quality control of materials and construction works,
- equity participation in motorway concessions,
- property development.

# Global Presence

Asia	Africa	America	Europe
<ul style="list-style-type: none"><li>• Bangladesh</li><li>• China</li><li>• East Timor</li><li>• Georgia</li><li>• India</li><li>• Iraq</li><li>• Philippines</li><li>• Saudi Arabia</li><li>• Turkey</li><li>• United Arab Emirates</li><li>• Vietnam</li></ul>	<ul style="list-style-type: none"><li>• Algeria</li><li>• Angola</li><li>• Cameroon</li><li>• Equatorial Guinea</li><li>• Ivory Coast</li><li>• Morocco</li><li>• Mozambique</li><li>• Senegal</li><li>• Tunisia</li></ul>	<ul style="list-style-type: none"><li>• Argentina</li><li>• Bolivia</li><li>• Brazil</li><li>• Chile</li><li>• Colombia</li><li>• Costa Rica</li><li>• Ecuador</li><li>• El Salvador</li><li>• Guatemala</li><li>• Honduras</li><li>• Mexico</li><li>• Nicaragua</li><li>• Panama</li><li>• Peru</li><li>• United States</li><li>• Venezuela</li></ul>	<ul style="list-style-type: none"><li>• Belgium</li><li>• France</li><li>• France Principality of Monaco</li><li>• Grand Duchy of Luxembourg</li><li>• Greece</li><li>• Poland</li><li>• Portugal</li><li>• Romania</li><li>• Spain</li><li>• Ukraine</li></ul>



4000+ collaborators



Established in 47 countries



Active in 58 countries

## Centres of Expertise

TPF has 3 global offices that contribute towards pre-defined infrastructure advisory services by centralizing knowledge and data.



BUILDINGS  
France



TRANSPORT  
INFRASTRUCTURE  
Spain



WATER-ENVIRONMENT-  
ENERGY  
Portugal



# Services Offered

TPFEPL believes in providing on-time and top-notch quality services to its clients and delivers end to end value engineered solutions from the time of project conceptualization to the operation and maintenance of the project.

<b>Idea generation and project conceptualization</b>	Bid preparation	
	Quantity Estimation	
	Tendering	
<b>Planning and feasibility studies</b>	Feasibility & Detailed Project Report	
	Town planning & urban management	Traffic studies
		Land acquisition proposals
		Structural conservation, restoration and development
<b>Detailed design consultancy</b>	Structural design and review	
	Geometric design	
	Detailed execution drawings	
<b>Execution and supervision through project management consultancy</b>	Independent Engineer	
	Authority's Engineer	
	Lender's Engineer	
	Quality and safety audit	
<b>Operation &amp; maintenance</b>	Bridge and road inventory management and analysis	
	Environmental Impact Assessment and health monitoring	
	Public Health and Waste Disposal Management	



# Sectors



**Bridges & Flyovers**



**Skywalks**



**Buildings**



**Roads & Highways**



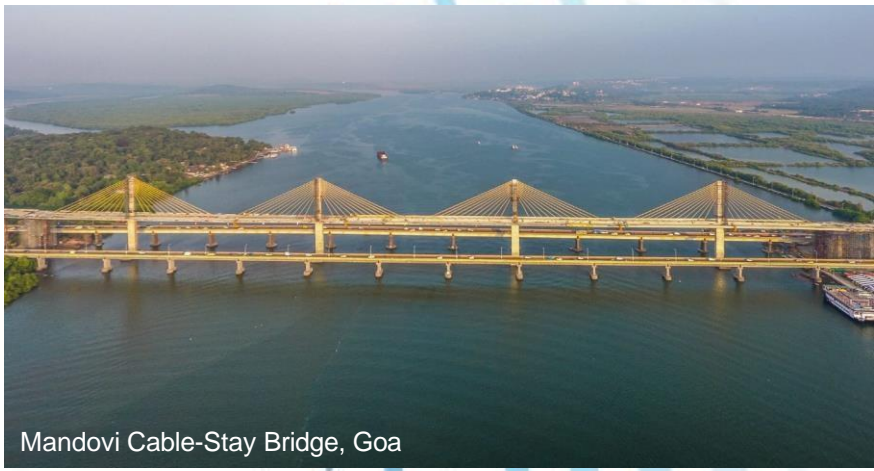
**Railways**



**Water, Environment  
& Energy**



# BRIDGES & FLYOVERS



Mandovi Cable-Stay Bridge, Goa



Gaundalim Bridge, Goa



Dhola-Sadiya Bridge, Assam



Aldona Cable-Stay Bridge, Goa



Pawana Basket-Handle Bridge, Pune



Kengeri Grade Separator, Bengaluru



Kapurbawdi Flyover, Mumbai



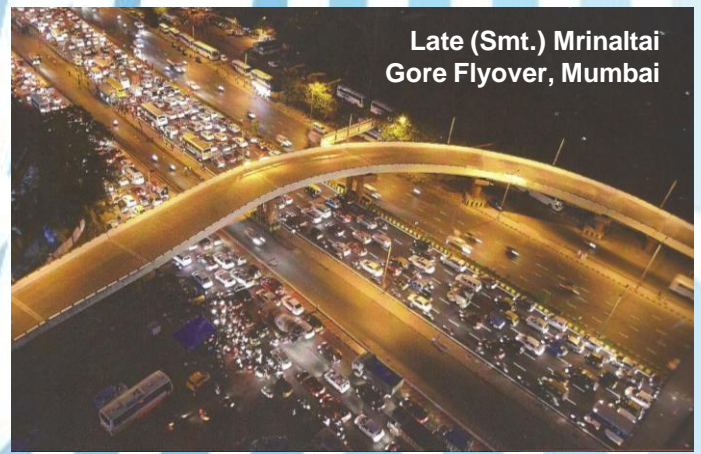
Dange Chowk Flyover, Pune



Kharghar Flyover, Mumbai



Late (Smt.) Mrinaltai Gore Flyover, Mumbai



Times of India Flyover, Mumbai



Tungabhadra River Bridge, Karnataka





# SKYWALKS



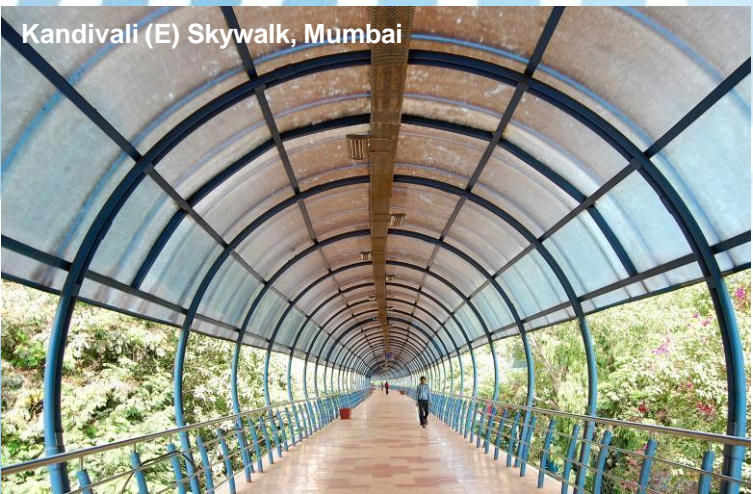
Bandra (E) Skywalk, Mumbai



Bandra (W) Skywalk, Mumbai



Grant Road Skywalk, Mumbai



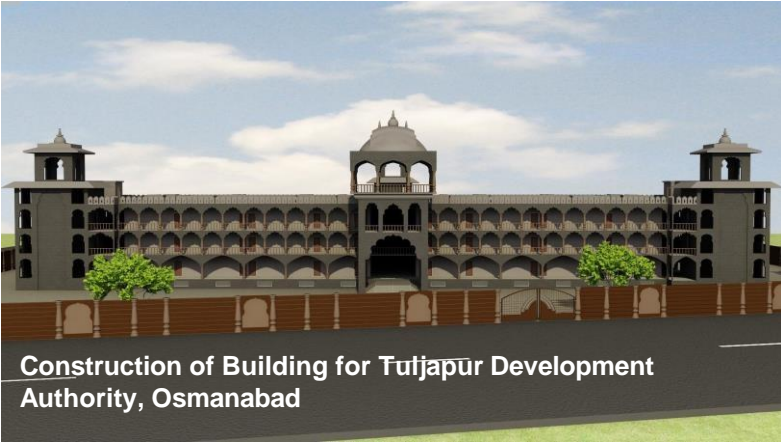
Kandivali (E) Skywalk, Mumbai



Construction of Rajasthan Bhavan, Navi Mumbai



Construction of Building for Tuljapur Development Authority, Osmanabad



Construction of Vidyalankar Institute of Technology, Mumbai



Design of 7 metro stations, Bangalore



Construction of Ojhar Airport Terminal Building, Nashik

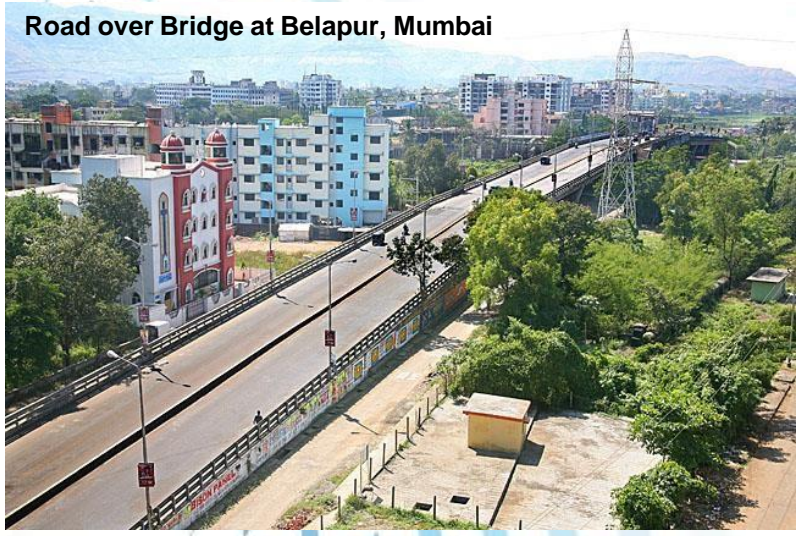


# BUILDINGS

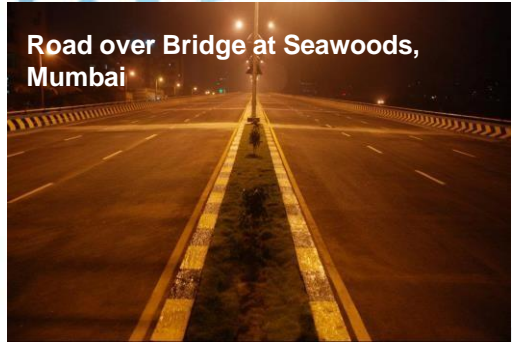


# ROADS & HIGHWAYS

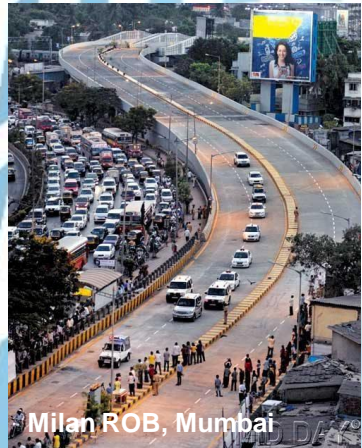
Road over Bridge at Belapur, Mumbai



Road over Bridge at Mahape, Mumbai



Road over Bridge at Seawoods, Mumbai



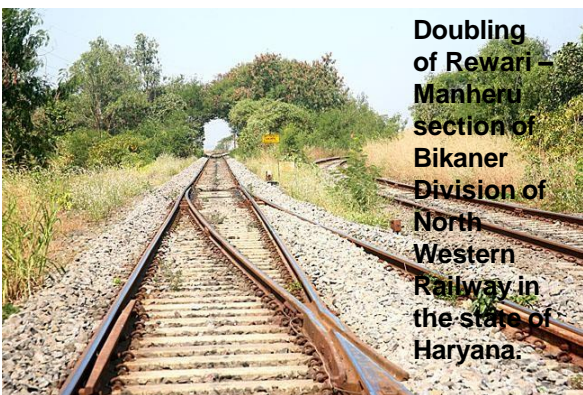
Milan ROB, Mumbai

Sion-Panvel Highway, Mumbai





# RAILWAYS



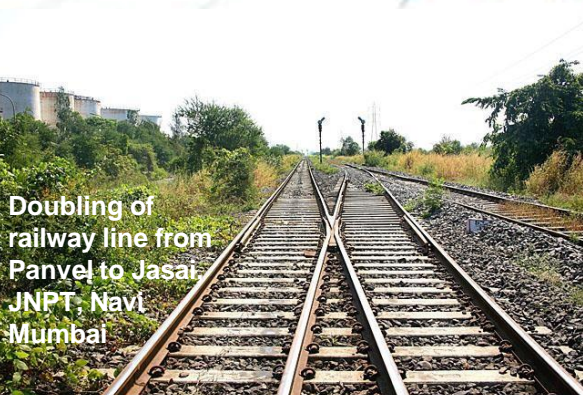
**Doubling of Rewari – Manheru section of Bikaner Division of North Western Railway in the state of Haryana.**



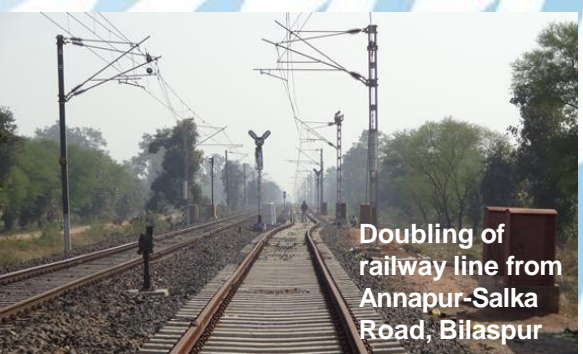
**Doubling of Hotgi-Gulbarga section in Maharashtra & Karnataka states**



**Dedicated Freight Corridor from JNPT to Sachin on Western Freight Corridor**



**Doubling of railway line from Panvel to Jasat, JNPT, Navl Mumbai**



**Doubling of railway line from Annapur-Salka Road, Bilaspur**

- Some other noteworthy projects:
1. Quality and Safety Audit Consultancy Services for Mughalsarai – New Bhaupur section of Eastern Dedicated Freight Corridor Project-2
  2. FLS for new BG Railway line connecting Mannargudi - Puttukottai, Tamil Nadu
  3. Design & Project Management Consultancy (PMC) for extension of platforms & associated works for running of 12 coach EMU trains on Harbour Line, Mumbai



# WATER



Sewage Treatment Plant, Airoli, Navi Mumbai



Sewage Treatment Plant, Indore



Sewage Treatment Plant, Nerul, Navi Mumbai



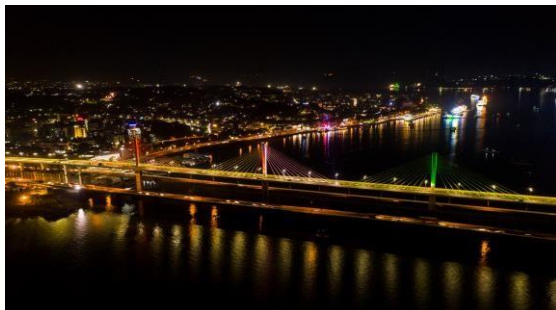
Sewage Treatment Plant, Vashi, Navi Mumbai



# SIGNATURE PROJECTS



1



2



3



4



5

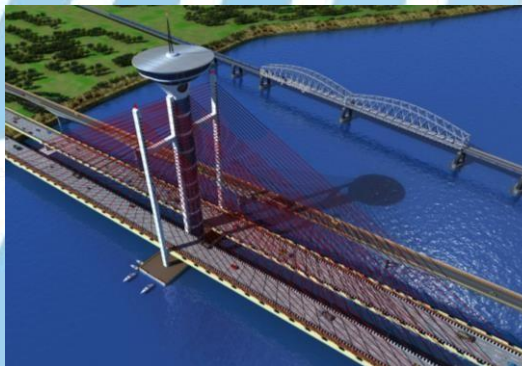


6

1. Mobile Bridge Inspection Unit – used to conduct bridge inventory and condition survey
2. Mandovi cable-stay bridge, Goa – the third longest cable-stay bridge in India
3. M. G. Setu bridge, Patna – the third longest river bridge in India (on-going work)
4. Dhola-Sadiya bridge over river Brahmaputra, Assam – India's longest bridge
5. Pawana basket handle bridge, Pune - First basket-handle bridge in India
6. Bandra (East) skywalk, Mumbai – the first skywalk in Mumbai
7. Zuari cable-stay bridge, Goa – India's third longest cable-stay bridge (on-going work)
8. Network Survey Vehicle mounted with lasers used to detect road and pavement conditions for clients across the country



8



7





Corporate Office: 14<sup>th</sup> 15<sup>th</sup> 16<sup>th</sup> Floor,  
Rupa Sapphire, Plot no. 12, Sector-18,  
Opposite Sanpada Railway Station, Sion -  
Panvel Highway, Vashi, Navi Mumbai - 400705



Registered Office: Unit No. 10, Banking  
Complex No. II, Sector – 19A, Vashi, Navi  
Mumbai, India – 400705



*For general enquiries:*  
[info@tpfepl.com](mailto:info@tpfepl.com)



*For business development enquiries:*  
[biu@tpfepl.com](mailto:biu@tpfepl.com)



Head Office landline: +022 4127 3303/04/05



[www.tpfepl.com](http://www.tpfepl.com)



[www.facebook.com/TPFEPL](https://www.facebook.com/TPFEPL)



[www.linkedin.com/in/TPFEPL](https://www.linkedin.com/in/TPFEPL)